

# Landing gear Modul

The Modul series of telescopic landing gear is extremely versatile. Thanks to its modular construction with variable mounting and operating heights, various crank handles and connection shaft lengths, plus five different foot types, all client requirements can be met.

Modul B is optimised standard telescopic landing gear. The Modul C range consists of various landing gears which are designed for special applications.

Both ranges offer convincing product advantages: the integrated gearbox has optimum protection, and requires minimum force to be applied on the crank handle in both directions. At the same time, Modul offers an extraordinary increase in lift of up to 120 mm combined with smaller dimensions for fitting. It goes without saying that the telescopic landing gear is extremely sturdy and complies with the strict AAR standard.

The landing gear is not a standalone, functional device. It is designed to be mounted on a trailer. The vehicle may not be operated until it has been ensured that the towed vehicle with the support complies with the applicable national road traffic regulations. In Germany, the relevant "TÜV" Safety Regulations and "StVZO" Motor Vehicle Safety Standards are to be observed. The telescopic landing gear is always to be used in conjunction with the instructions for use issued by the manufacturer of the relevant trailer.



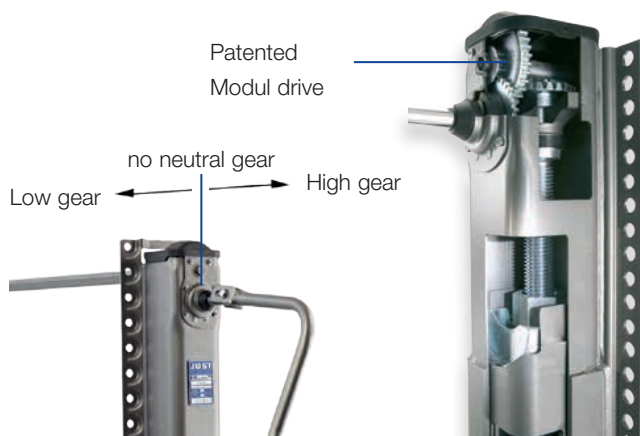
## Tried-and-tested Modul system



Since the market entrance Modul landing gears are setting benchmarks. The modular construction allows a multitude of different varieties.

- Easy to assemble and replace foot system
- Greatest flexibility of installation thanks to a range of back plates
- Various crank handles and connection shaft lengths
- Significant gain in lifting force compared to comparable products
- Attractive design
- For universal application
- Type reduction thanks to modular system guarantees high level of flexibility in spare parts business

## Patented Modul drive



The patented drive is perfectly protected by the internal construction. In addition it offers various advantages in daily use:

- Easy to change between high and low gears
- Very compact construction with high efficiency and extremely low wear
- Large lifting force per turn of the crank with low crank force allows easy and convenient operation
- Reliably secured against run-down
- Maintenance-free

## Support feet

The Modul series of telescopic landing gear are available with a range of different feet: S, A, T and TC foot.



Foot-S  
(Standard)



Foot-A  
(Rocking foot)



Foot-TC  
(Flat sand shoe)



Foot-T  
(Sand shoe)

## Additional advantages

### Outstanding corrosion protection

Landing gears from JOST are especially sturdy and resist also unfavorable exterior conditions.

- Careful pre-treatment
- Premium surface through powder coating
- Long-lasting protection against environmental influences and stone chips

### Easy maintenance

The Modul landing gears are equipped with a long-term lubrication. Therefore they can be used three years without relubrication.

- Long-lasting, maintenance-free drive
- No need for subsequent lubrication of our premium stabilisation and aluminium telescopic landing gears with lubrication tube

Lubrication tube



### Tested and developed according to internationally recognized standards

- Regular inspection during series production based on the strict AAR standard
- Quality management in accordance with ISO/TS 16949
- Environmental management in accordance with ISO 14001
- **3 year guarantee**

### Top service

Locations worldwide and a broad network of dealers ensure qualified support.

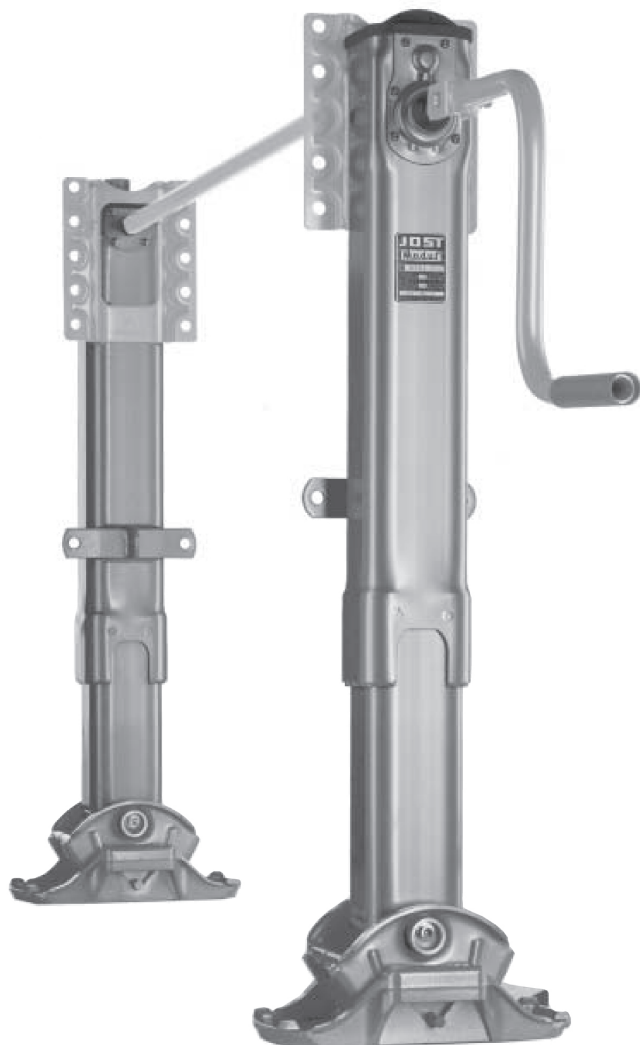
- Competent and individual advice from Sales and Customer Service
- Support for our customers using CAD data during the planning phase
- High level of prevalence and global spare parts supply with short delivery times
- Easy to repair, such as using our foot replacement system



# Modul

## Flexibility due to a modular ordering system

The ordering system allows clients to choose and put together a set of legs to suit their needs.



## Installation height

|            | max. lift |
|------------|-----------|
| 02 = 850mm | 520mm     |
| 03 = 800mm | 470mm     |
| 05 = 700mm | 400mm     |

## Foot versions

00 = without foot

| fitted             |                   | Part No. |
|--------------------|-------------------|----------|
| 01 = S Foot        | compensating foot | JSD01    |
| 02 = A Foot        | rocking foot      | JSD02    |
| 03 = R Foot        | wheels            | JSD03    |
| 04 = T Foot        | sand shoe         | JSD04    |
| 06 = Low Profile T |                   | JSD06    |

## Crank handle with parking hook

|            |          |
|------------|----------|
| 03 = 450mm | Optional |
| 05 = 520mm | Standard |

## Connection Shaft

|             |          |
|-------------|----------|
| 10 = 1790mm | Standard |
|-------------|----------|

Note: the connection shaft is square

[illegible]

## Crank handle

| Reference | B   | C   | D   |
|-----------|-----|-----|-----|
| JSU03     | 450 | 634 | 658 |
| JSU05*    | 520 | 704 | 728 |

## Connection shafts

Standard with set of legs.

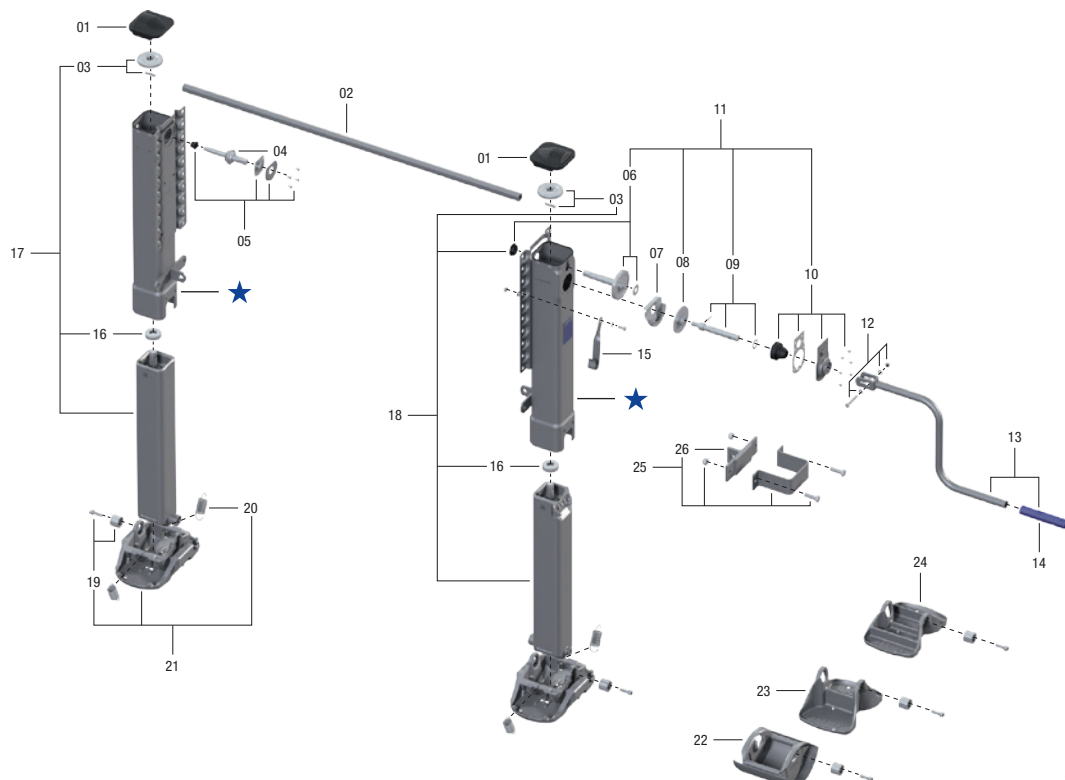
00 = without foot

|                |                    |
|----------------|--------------------|
| JSD01 = S Foot | compensating foot  |
| JSD02 = A Foot | rocking foot       |
| JSD03 = R Foot | wheels             |
| JSD04 = T Foot | sand shoe          |
| JSD06 = LP T   | low profile T foot |

Subject to change in dimensions and design

# Modul B

## Spare parts



★ no spare part

| Item | Description                       | Remark                                   | Order No.   | per kit |
|------|-----------------------------------|--|-------------|---------|
| 01   | Cover                             |  | JS E0046100 | 2       |
| 02   | See individual components         |  |             |         |
| 03   | Bevel gear with bolts             | from 020719/0126097                      | JS E0058600 | 2       |
| 04   | Shaft                             |  | JS E0001500 | 1       |
| 05   | Bearing                           | compl.                                   | JS E0046200 | 1       |
| 06   | Shaft with bearing                | a  | JS E0058700 | 1       |
| 07   | Grease tank                       | a  | JS E0002000 | 1       |
| 08   | Gear                              | a  | JS E0055800 | 1       |
| 09   | Crank shaft                       | compl.                                   | JS E0046500 | 1       |
| 10   | Bearing holder                    | compl.                                   | JS E0058800 | 1       |
| 11   | Drive                             | compl., with 06, 08, 09 + 10, a, c       | JS E0083700 | 1       |
| 12   | Bolts, washers, nuts              |  | JS E0043100 | 1       |
| 13   | See individual components         |  |             |         |
| 14   | Crank bushing                     |  | JS E0042700 | 1       |
| 15   | Crank parking hook                | for crank 350 mm, (JS U01), b            | JS E0040200 | 1       |
| 15   | Crank parking hook                | for crank 415–480 mm, (JS U02-JS U04), b | JS E0040201 | 1       |
| 15   | Crank parking hook                | for crank 520–620 mm (JS U05-JS U08), b  | JS E0040202 | 1       |
| 16   | Axial bearing ****                |  | JS E0066401 | 2       |
| 17   | Mh-01/900 inner tube l. + spindle | with 16 + 03                             | JS E0056401 | 1       |
| 17   | Mh-02/850 inner tube l. + spindle | with 16 + 03                             | JS E0056402 | 1       |
| 17   | Mh-03/800 inner tube l. + spindle | with 16 + 03                             | JS E0056403 | 1       |
| 17   | Mh-04/750 inner tube l. + spindle | with 16 + 03                             | JS E0056404 | 1       |
| 17   | Mh-05/700 inner tube l. + spindle | with 16 + 03                             | JS E0056405 | 1       |
| 17   | Mh-06/650 inner tube l. + spindle | with 16 + 03                             | JS E0056406 | 1       |
| 18   | Mh-01/900 inner tube r. + spindle | with 16 + 03                             | JS E0056201 | 1       |
| 18   | Mh-02/850 inner tube r. + spindle | with 16 + 03                             | JS E0056202 | 1       |
| 18   | Mh-03/800 inner tube r. + spindle | with 16 + 03                             | JS E0056203 | 1       |
| 18   | Mh-04/750 inner tube r. + spindle | with 16 + 03                             | JS E0056204 | 1       |
| 18   | Mh-05/700 inner tube r. + spindle | with 16 + 03                             | JS E0056205 | 1       |
| 18   | Mh-06/650 inner tube r. + spindle | with 16 + 03                             | JS E0056206 | 1       |
| 19   | Nut and bolt**                    |  | JS E1043300 | 2       |
| 20   | Spring                            |  | JS E0012900 | 4       |
| 21   | S-Foot                            | compl., with 19 + 20***                  | JS D01      | 2       |
| 22   | A-Foot                            | compl., with 19***                       | JS D02      | 2       |

# Modul Series Landing Legs

**Available in 400mm, 470mm, 520mm**  
**Travel Standard outside flange mounting models**



9" Diameter Standard Wheels  
 9" Diameter Standard Wheels  
 9" Diameter Standard Wheels

Modul R 400mm  
 Modul R 470mm  
 Modul R 520mm



329mm x 230mm Sand Shoes (T Feet)  
 329mm x 230mm Sand Shoes (T Feet)  
 329mm x 230mm Sand Shoes (T Feet)

Modul T 400mm  
 Modul T 470mm  
 Modul T 520mm



Air Suspension Feet (280mm x 240mm)  
 Air Suspension Feet (280mm x 240mm)  
 Air Suspension Feet (280mm x 240mm)

Modul A 400mm  
 Modul A 470mm  
 Modul A 520mm



Compensating Feet (397mm x 260mm)  
 Compensating Feet (397mm x 260mm)  
 Compensating Feet (397mm x 260mm)

Modul S 400mm  
 Modul S 470mm  
 Modul S 520mm



Supplied without Feet can take R.T.S or A Feet  
 Supplied without Feet can take R.T.S or A Feet  
 Supplied without Feet can take R.T.S or A Feet

Modul WF 400mm  
 Modul WF 470mm  
 Modul WF 520mm



Note: Inside flange mounting models also available