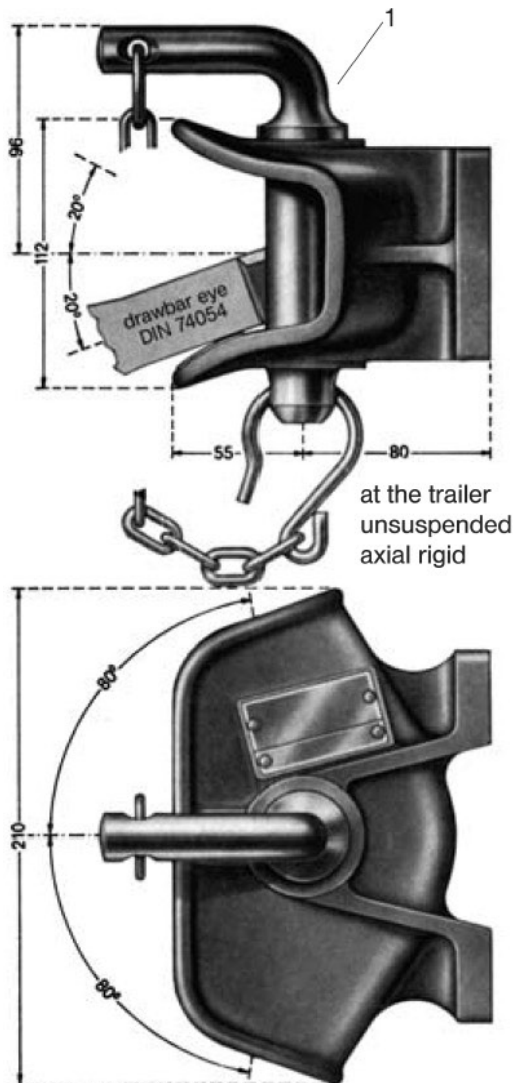
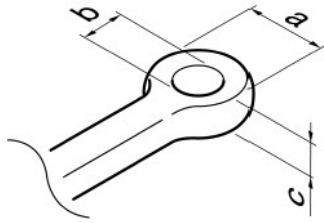


Series RO805B



Technical data:

- Non-automatic trailer coupling with flange bearing hole pattern: 120mm × 55mm

Part no.	D ¹ (kN)	S ² (t)	ABG M
369U130	60,4	0,65	3455

¹ D-value

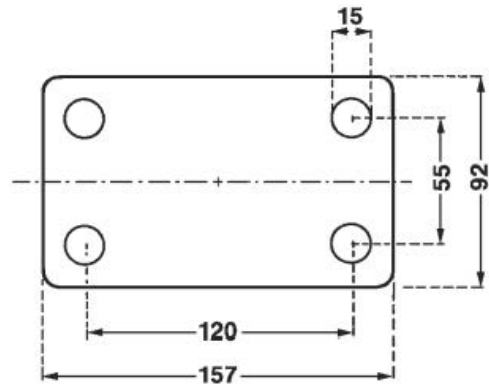
² Statical vertical load

- Usable on agricultural trailers only (R) (p.e. R¹ = 16t; R² = 10t)
- Admissible total weight of a vehicle combination of 40t

Usable drawbar eyes

DIN	nominal dimensions			turn-angle (see fig.)	
	a (mm)	b (mm)	c (mm)	horizontal	vertical
74054	100	40	30,5	min. 80°	min. 20°

Dimensions of the coupling



Spare parts for series RO*805B

no.	Designation	Piece	Part no.
1	Insert pin	1	R70323
	Type plate		Upon request

