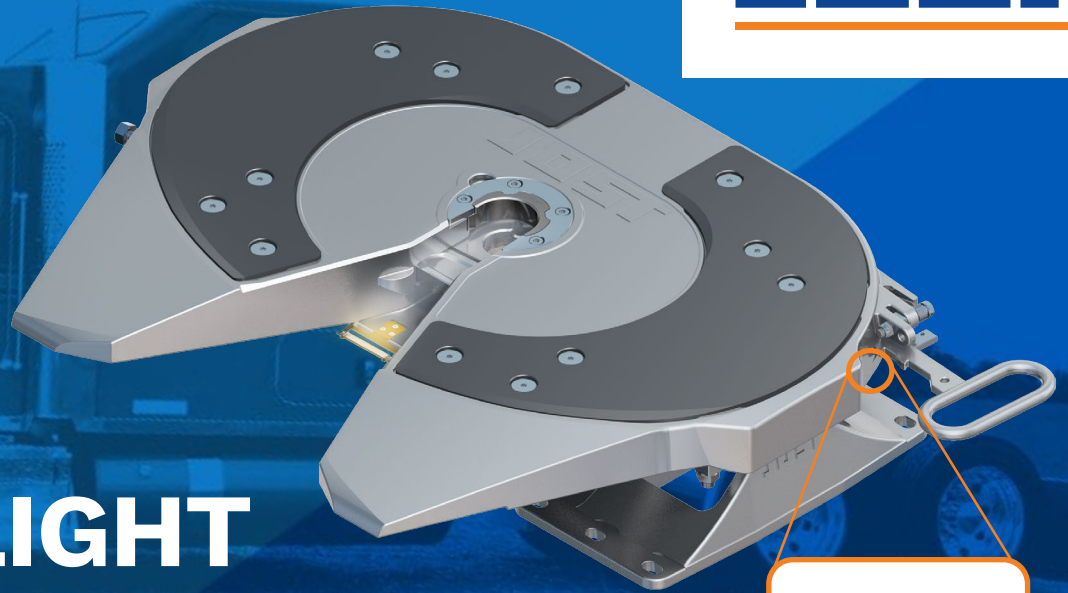


LOC-LIGHT SENSOR



Security & Illumination

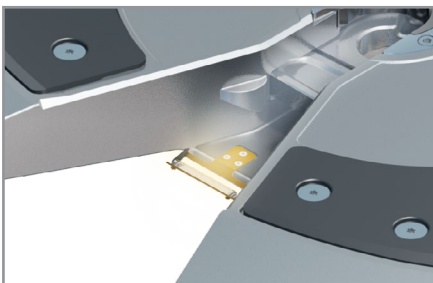
Suitable for truck, trailer, and dolly applications, the JOST Loc-Light system offers enhanced security and illumination. Compatible with JOST sensor fifth wheels, it features dual-sensor monitoring and LED throat illumination.

The Loc-Light system enhances your JOST fifth wheel with the addition of our two-sensor monitoring system as well as a LED throat illumination.

The dual-sensor system is connected to the Go/No-Go indicator light located next to

the handle. A proper coupling with the handle and kingpin in the locked position will be lit up as green or “Go light”. If the system does not detect the handle and/or kingpin in the proper locked position, the light will flash red or “No-Go light” with audible alert.

The throat illumination light automatically turns on when the system is engaged. The light shines directly into the throat of the wheel to provide a better view of the lockbar for pre-trip inspections.



Throat Illumination

LED Light shines into the throat for clear inspection of the coupled fifth wheel.



Go Light

Green light indicates the fifth wheel is properly coupled, with both kingpin and handle in the locked position.



No-Go Light

Flashing red light with audible alert indicates that the kingpin and/or handle are not properly coupled.