



- 1. FAILURE TO FOLLOW THESE INSTRUCTIONS COULD CAUSE A HAZARDOUS CONDITION!**
- 2. PERFORM ALL MAINTENANCE WITH TRACTOR UNCOUPLED FROM TRAILER.**
- 3. ALL PROCEDURES MUST BE PERFORMED BY QUALIFIED PERSONNEL.**

A. LUBRICATION (as required):

1. Lubricate the kingpin lock using a hand pump grease gun through the grease zerk provided on the skirt of the fifth wheel (see figure 1).
2. Apply a lithium-based grease with EP additive (extreme pressure) to the trailer contact surface of the fifth wheel.
3. Apply a light oil to all moving parts.
4. For sliding fifth wheels spray diesel fuel on slide path of the base plate.

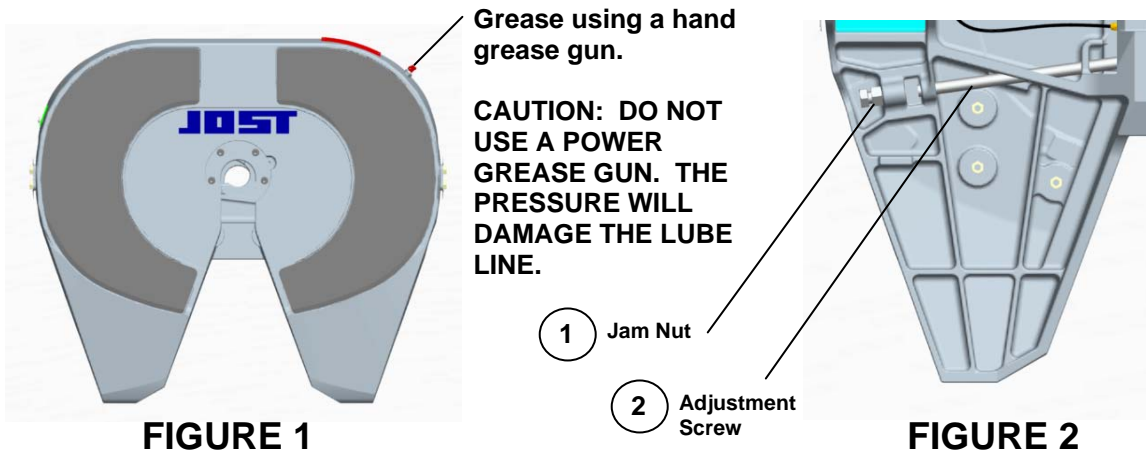


FIGURE 1

FIGURE 2

B. INSPECTIONS AND ADJUSTMENTS:

(Perform the following every 3 months or 30,000 miles)

1. Inspect the mounting – repair or replace any missing or damaged fasteners or broken components.
2. Inspect bracket pin bolts, make sure locking tabs are properly securing the bolts in place (Figure 3).
3. Inspect the fifth wheel for bent, worn or broken parts. Replace with genuine **JOST** parts (see page 4 for parts list).
4. Inspect the lube plates and replace if damaged or when the plates wear down to the topplate ridge surrounding lube pockets.



Locking tabs properly securing bolts

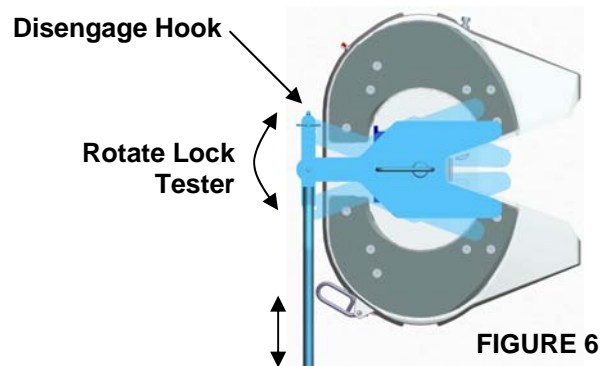
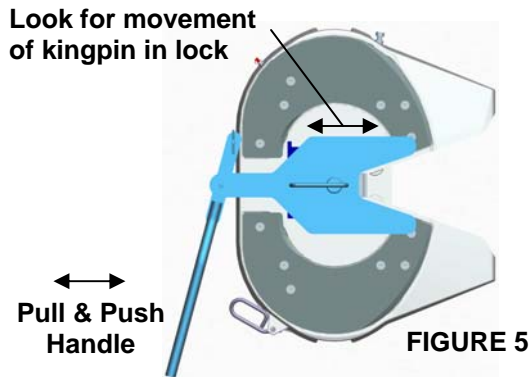
FIGURE 3

5. **Check Adjustment** - Lock and unlock several times using a lock tester. Check that the locking mechanism functions properly (see operating instructions).

- A. **The lock is properly adjusted if:** The wheel locks and unlocks easily each time and the lock tester rotates freely.
- B. **The lock is too loose if:** You feel fore-aft play when pulling and pushing on the lock tester handle (see figure 6)
- C. **The lock is too tight if:** The lock tester does not rotate freely when attempting to rotate it in the lock. (See figure 6)

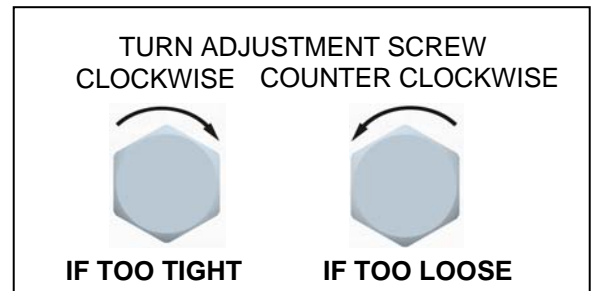


FIGURE 3



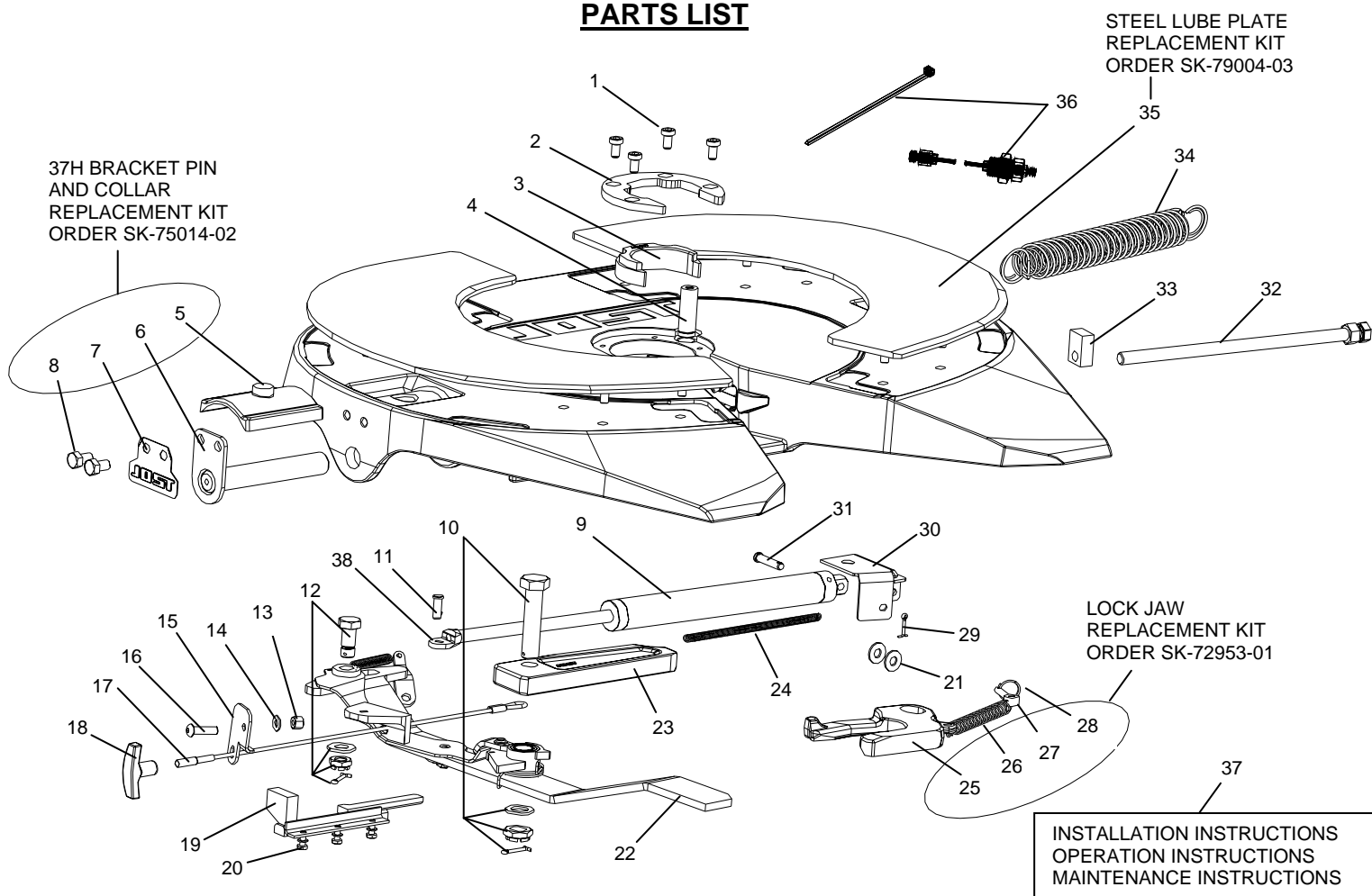
6. **Correct improper adjustment**

- A. **If it is too tight:** loosen the jam nut (see figure 2 item 1), turn the adjustment screw (see figure 2 item 2) clockwise one full turn and reset the jam nut. Then, lock and unlock several times, repeat if necessary.
- B. **If it is too loose:** loosen the jam nut, turn the adjustment screw counterclockwise one full turn and reset the jam nut. Then, lock and unlock several times, repeat if necessary.



WARNING **DO NOT USE ANY FIFTH WHEEL THAT FAILS TO OPERATE PROPERLY!**

PARTS LIST



Item	Description	Part No.	Item	Description	Part No.	Item	Description	Part No.
1	Cushion ring bolt	SK-73121-55	16	3/8-16 x 1-1/4" button screw	SK-70206-02	31	5/16" dia x 1-1/2" lg clevis pin	SK-70102-08
2	Cushion ring plate	SK-3105-93	17	Pull cable assembly	SK-79016-46	32	Adjustment screw with hex nut	SK-79010-05
3	Cushion ring insert	SK-3105-92	18	T-handle air release	SK-71012-00	33	Guide piece	SK-73205-07
4	Pivot pin for lock jaw	SK-72106-67	19	Lock/unlock plate weldment	SK-79016-22	34	Double tension spring	SK-3105-20
5	Collar	SK-73105-95	20	5/16-18 x 1" socket hd cap screw	SK-70202-28	35	Narrow topplate lube plate	SK-79005-05
6	Bracket pin	SK-73104-05	21	5/16" SAE flat washer	SK-70302-03	36	Lubricating kit	SK-3108-02
7	Tab washer	SK-73104-47	22	Release arm assembly	SK-79016-37	37	Info pack	SK-75020-16
8	3/8-16 x 3/4 hex bolt	SK-73121-28B	23	Locking bar	SK-3205-06	38	Cylinder Clevis	SK-79020-06
9	Air cylinder	SK-79020-04	24	Cable spring	SK-71005-04			
10	Locking bar bolt assembly	SK-73221-01	25	Lock jaw	SK-1489LZ			
11	3/8" dia. x 3/4" lg slic pin	SK-70105-01	26	Lock jaw spring	SK-847			
12	Pivot bolt assembly	SK-71513	27	Eyebolt	SK-2106-69			
13	3/8-16 locknut	SK-70401-02	28	Ring	SK-2106-70			
14	3/8" SAE flat washer	SK-70302-01	29	1/8" dia x 1" lg cotter pin	SK-70101-03			
15	Handle guide	SK-79016-32	30	Cylinder mount bracket	SK-79016-34			

Major Rebuild Kit		Minor Rebuild Kit	
Complete Topplate		Cushion and Lock Jaw	
Includes Items 1-36 above		Includes Items 1-4, 25-28, & 36 above	
Order number	Weight	Order number	Weight
SK 75013-15	70 lbs.	SK 73221-50Z	6 lbs.

The right to alter specifications is reserved.

